

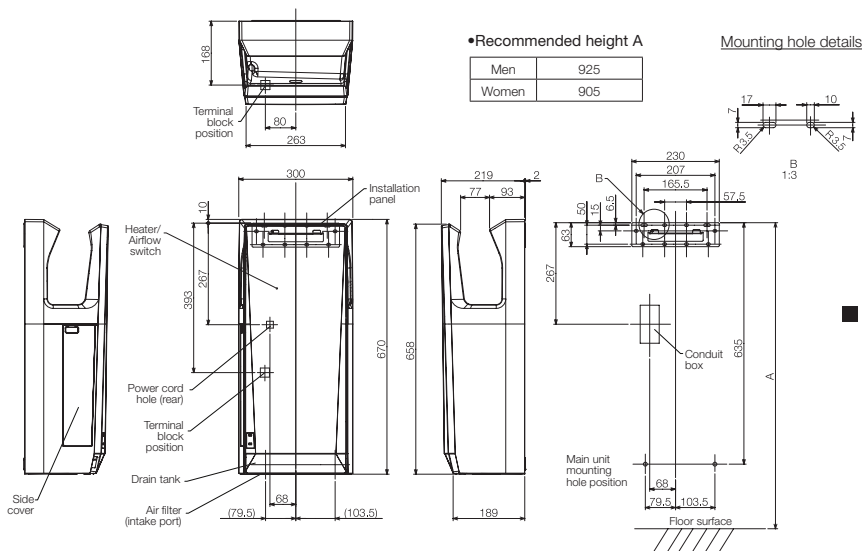
## Specifications

|                                | Power supply        | Mode     | Heater | Drying time*1 (sec) | Power consumption(W) | Noise*2 (dB) | Motor type   | Hygienic features  | External dimensions (mm)                | Weight (kg) | Drain tank (L) |
|--------------------------------|---------------------|----------|--------|---------------------|----------------------|--------------|--------------|--|---|-------------|----------------|
| Jet Towel Slim<br>JT-SB216JSH2 | 220-240V<br>50-60Hz | High     | ON     | 9-11                | 1240                 | 59           | Brushless DC | - Antibacterial surfaces<br>- NSF certification<br>- Alcohol-cleanable | Width: 300<br>Depth: 219<br>Height: 670 | 11          | 0.8            |
|                                |                     |          | OFF    | 11-13               | 720                  |              |              |  |   |             |                |
|                                |                     | Standard | ON     | 11-13               | 1070                 | 56           |              |  |   |             |                |
|                                |                     |          | OFF    | 13-15               | 550                  |              |              |  |   |             |                |
| Jet Towel Slim<br>JT-SB216KSN2 |                     | High     | —      | 11-13               | 720                  | 59           |              |  |   |             |                |
|                                |                     | Standard | —      | 13-15               | 550                  | 56           |              |  |   |             |                |

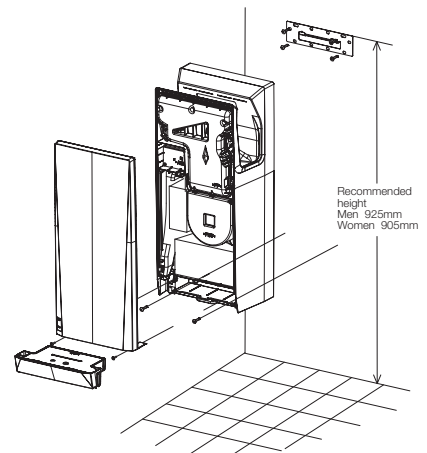
\*1 Time needed to reduce remaining water to 50mg or less per hand (in-house study).

\*2 Measurements made in anechoic chamber at a distance of 2m.

### ■ Dimensions



### ■ Mounting Diagram



- For fastening main unit mounting screws, use a Phillips(+) screwdriver with a shaft length of at least 150mm.
- Mount the unit so that the left-side cover is removable and the rating label is visible. (At least 150mm, but 200mm or more is recommended. Embedded portion is excluded.) Allow 200mm or more to enable the water drainage duct to be checked after cleaning.
- Allow at least 130mm between the bottom surface (air-intake port) of the unit and the floor surface.

(Unit: mm)

# Jet Towel Smart

The latest evolution of the original dual-jet hand dryer



\*Jet Towel Smart Lite available only in white

## Smarter drying

— Industry Top-class Drying Performance and Energy Efficiency

The engineers at Mitsubishi Electric have simultaneously achieved amazing 9-12sec drying performance and the lowest power consumption in Jet Towel history.

|                                   | Jet Towel Slim | Jet Towel Mini | Jet Towel Smart |
|-----------------------------------|----------------|----------------|-----------------|
| Energy consumption (Per 100 uses) | 0.31 kWh       | 0.30 kWh       | 0.25 kWh        |

\*Energy consumption calculated with the following assumptions: input voltage of 240V, heater on, and at high power settings. Standby power consumption not included in calculation.

## Tough exterior

The protective steel outer shell and ABS plastic body are designed to take quite a beating. They have been tested to withstand 15J, which is more than two times the energy of an average impact\*. The IPX-3 rating for water resistance means that it is also protected against water infiltration from spraying water.

\*Mitsubishi Electric estimates





- Antibacterial surfaces\*1
- Designed for alcohol cleaning\*1
- Quiet operation 58dB
- Robust design
- Quick start 0.1sec response
- Protective steel shell\*2
- PTC heater\*2

\*1 Excluding front panel of JT-S2AP  
 \*2 Available for JT-S2AP models

## Comfortable to use

### Large Drying Area

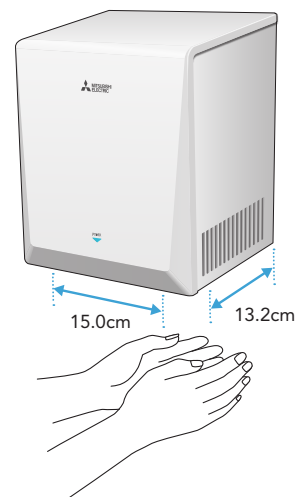
With 13.2cm between the air nozzles and the wall, there is even more than enough space for large hands to dry comfortably.

### 0.1sec Quick Response

Optimized hand sensors quickly react to users' input for a more positive user experience. It takes less than 0.1sec for the unit to detect hands and begin dispensing air.

### 15cm Wide Nozzle

The wide nozzle spreads airflow across a large area, enabling both hands to be covered at the same time.



# Other smart features

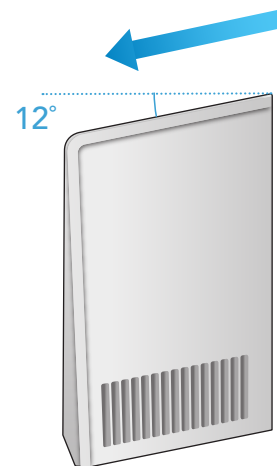
## Easy Air Filter Maintenance

The air filter is important as it prevents excess dust and dirt from accumulating inside of the unit. The filter is placed conveniently right up against the side of the intake grill, allowing for quick cleaning without any disassembly required!



## Smart Tilted Roof Design

The top of the Jet Towel Smart is tilted at a 12° angle to prevent users from leaving unwanted trash and other objects on the unit.



## Specifications

|   | Power supply        | Mode     | Heater | Drying time* <sup>1</sup> (sec) | Power consumption (W) | Motor type       | Noise* <sup>2</sup> (dB) | Hygienic features  | External dimensions (mm)                | Weight (kg) |
|---|---------------------|----------|--------|---------------------------------|-----------------------|------------------|--------------------------|--|---|-------------|
| <b>Jet Towel Smart JT-S2AP</b><br>(Metal cover)   | 220-240V<br>50-60Hz | High     | ON     | 9-12                            | 880-980               | Commutator motor | 60-62                    | - Antibacterial surfaces<br>- NSF certification<br>- Alcohol-cleanable | Width: 250<br>Depth: 160<br>Height: 290 | 4.5         |
|   |                     |          | OFF    | 10-13                           | 630-730               |                  |                          |  |   |             |
|   |                     | Standard | ON     | 14-16                           | 660-740               |                  |                          |  |   |             |
|   |                     |          | OFF    | 15-17                           | 410-490               |                  |                          |  |   |             |
| <b>Jet Towel Smart Lite* JT-S2A</b><br>(ABS body) |                     | High     | —      | 10-13                           | 630-730               | 60-62            |                          | Width: 250<br>Depth: 162<br>Height: 292                                | 4                                       |             |
|   |                     | Standard | —      | 15-17                           | 410-490               | 58-59            |                          |  |   |             |

\* Jet Towel Smart Lite available only in white.

\*1 Time needed to reduce remaining water to 50mg or less per hand (in-house study).

\*2 Measurements made in anechoic chamber at a distance of 2m.